

## REFERENCES

# NAVAL TRANSPORT



## INNOVATION AND TRADITION



PCG Portuguese Consulting Group

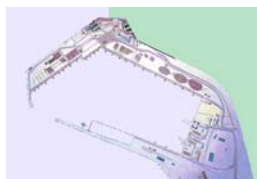




## Transport (Maritime - Ports)

### Rehabilitation of the Ferry Terminal in Dürres

ALBANIA Dürres



EU - European Union



#### Designation

Rehabilitation of the Dürres ferries terminal, construction of a passengers quay and accesses to the terminal.



#### Services Provided

Project implementation and supervision of work.

2810

### Eurominas, Mitrena (Implementation of Hydraulic fill)

PORTUGAL Setúbal



EUROMINAS (Electro Metallurgical)



#### Designation

Implementation of hydraulic fill to win the Sado estuary embankment with an area of 30ha by dredging of sand at the front and repulsion.



#### Services Provided

Project planning and preparation for competition; technical assistance to the Employer.

3299

### Main Wharf Touristic - Fluvial of Régua

PORTUGAL Peso da Régua



Institute Navigability Douro (now IPTM)



#### Designation

Wharf with 220 extension m, including port of mooring of recreation boats, building bar restaurant and buildings of support. Consolidation and urbanity recovery of the together hillside to the city of "Peso da Régua", including new urban infrastructures.



#### Services Provided

Tender Phase of all specialties. Technical assistance.

3464

## Transport (Maritime - Ports)

### Oil Export Terminal

IRAQ Khor-Zubair



State Company for Oil Projects



#### Designation

Petroleum and by-products exportation terminal.



#### Services Provided

Basic engineering design: liquid combustibles, lubricants, maritime works, pipe-lines (suspended 1990).

2790

### Technical Assistance to the Port of Luanda

ANGOLA Luanda



Ministry of Transport - Government of Angola



#### Designation

Technical assistance to the port of Luanda.



#### Services Provided

Hydrographic surveying, port, preparation of legislation basis for leases, operating rules and tariffs; Contract documents for the concession of several terminals.

3328

### Aktau Port Rehabilitation

KAZAKHSTAN Aktau



Ministry of Work and Commerce of Kazakhstan



#### Designation

Rehabilitation of the structure and facilities of the port of Aktau in Kazakhstan to cope with the increased level of the Caspian Sea and the growing volume of cargo handled.



#### Services Provided

Profabril provided the following services: Initial studies of design, program-based and previous study, research studies on local conditions; Studies of circulation and maneuvering on land and at sea; Detail design and construction supervision.

3327



## Transport (Maritime - Ports)

### Passenger Terminal in Macau (Jet-foil Terminal)

MACAU - CHINA Macau



Macau Government



#### Designation

Passenger terminal to 20 million passengers per year, over an area of 14ha reclaimed. The terminal includes 12 mooring boths for fast vessels and 2 / 3 berths for ferries.



#### Services Provided

Profabril provided the following services: Initial studies of design, program-based and preliminary study, research studies on local conditions; Studies of circulation and maneuvering on land and at sea; detailed project.

3326

### Ka Ho Harbour

MACAU - CHINA Coloane



Macau Government



#### Designation

Ka Ho Harbour, in Coloane, on the island of Taipa.



#### Services Provided

Engineering design.

3673

### Study of Development of Ports of Bratislava and Komárno (Danube River)

SLOVAKIA Bratislava / Komárno



Government of Slovakia



#### Designation

Study of development of two Ports (Bratislava y Komárno) of the Danube river in Slovakia.



#### Services Provided

Technical assistance for developing new market strategies for the ports of Bratislava and Komárno, including analysis of current situation, estimates of investment and feasibility.

2805

## Transport (Maritime - Ports)

### Main Wharf Touristic - Fluvial of Foz do Távora

PORTUGAL Foz do Távora



Institute Navigability Douro (now IPTM)



#### Designation

Wharves of 40 m, urban arrangement of the neighboring area and zone of car parking and accesses.



#### Services Provided

Design for Public Bid, Preliminary study, Tender Phase of all specialties.

3466

### Port of Aktau

KAZAKHSTAN Aktau



Aktau International Transport Company



#### Designation

Aktau Port Rehabilitation Project (Phase I): rehabilitation of the dry cargo berths and cargo facilities.



#### Services Provided

Consultancy services for the reconstruction and rehabilitation of the port, including infrastructures, marine works and equipment.

2809

### Main Wharf Touristic - Fluvial of Barca de Alva

PORTUGAL Barca de Alva



City Hall of Figueira de Castelo Rodrigo



#### Designation

Wharf in the River Douro with 80 length m, including slope, building bar restaurant, support building. Urban arrangement of an area with about 6000 sq.m.



#### Services Provided

Tender Phase of all specialties. Technical assistance.

3465



## Transport (Maritime - Ports)

### Sugar Export Terminal in the Port Abidjan

IVORY COAST Abidjan



SODESUCRE (now SUCRIVOIRE)



#### Designation

Raw sugar terminal at the Port of Abidjan.



#### Services Provided

Preliminary design for bidding purposes.

2771

### Raw Sugar Warehouse at the Port of Casablanca

MOROCCO Casablanca



Tate & Lyle



#### Designation

Raw sugar warehouse (50,000 t capacity) at the Port of Casablanca.



#### Services Provided

Design; tender and bid evaluation.

2779

### Luanda Port

ANGOLA Luanda



Ministry of Transport - Government of Angola



#### Designation

Physical studies and development of the Port of Luanda



#### Services Provided

Development plan and infrastructure projects. Preparation of previous studies and projects (land access system and the layout and design of a container terminal for 250,000 TEU / year)

2806

## Transport (Maritime - Ports)

### New Ferry Terminal in Macau Airport

MACAU - CHINA Taipa



STDM (Society of Transportation Macau)



#### Designation

New ferry terminal to Macau International Airport (4.500 sq.m).



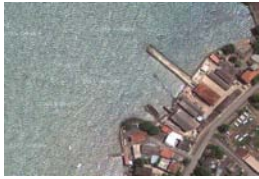
#### Services Provided

Architecture and of all specialties, tender, and management and supervision of works. Conceptual and detail design.

2804

### Improvement of the Port of São Tomé

. TOME AND PRINCIPE S. Tomé e Príncipe



Government of Sao Tome and Principe



#### Designation

Improvement of the Sao Tome Port.



#### Services Provided

Technical Assistance to ENAPOR within the fields of: port operations, maintenance organisation, equipment recovery, institutional reinforce and training of personnel.

2803

### "Sea-line" in Port of Safi

MOROCCO Safi



OCP Office Chérifien des Phosphates



#### Designation

Sea-line for the discharging of ammonia from ships, including storage facilities and equipment.



#### Services Provided

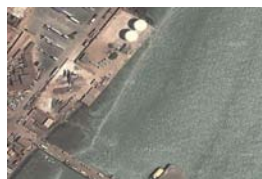
Feasibility study including the following fields: technical (sea-line, storage and equipment), safety, investment cost and economic.

2800

## Transport (Maritime - Ports)

### Port of Pindjiguiti (Fuels Tank Farm)

GUINEA-BISSAU Pindjiguiti



**Petromar**

PETROMAR - Sociedade de Abastecimentos Petrolífero

#### Designation

Port of Pindjiguiti, Bissau: fuels tank farm.

#### Services Provided

Study for the settlement of the tanks foundations.

2798

### New Container Port and Industrial Free Zone at South Hidd

BAHRAIN South Hidd



Government of Bahrain

#### Designation

New port and industrial area free zone at South Hidd with causeway/bridge.

#### Services Provided

Market study of demand of industrial land, shipping in the Middle East, traffic studies; financial and technical appraisal of the projects in isolation and as one integrated project; master plan of the projects for a phased construction.

2797

### Development Study of Mina Sulman Port

BAHRAIN Sulman



Government of Bahrain

#### Designation

Port of Mina Sulman development study.

#### Services Provided

Study of the shipping in the Arabic Gulf, study of the development of the Arabic Peninsula, master plan of the port and economic and financial feasibility study.

2794



## Transport (Maritime - Ports)

### Wharf Akoniki

### EQUATORIAL GUINEA Akoniki



Somagec / Etermar

#### Designation

Wharf Akoniki, Equatorial Guinea - Construction of 2 access bridges with 7 m wide and 43.4 m long, and a dock with 32 m wide and 150 m long.

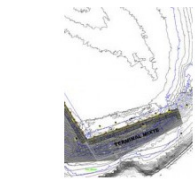
#### Services Provided

Project implementation: structure (precast concrete plate, placed on the metal structure).

137

### Project of Compound Harbour of Port Malabo

### EQUATORIAL GUINEA Malabo



Somagec / Etermar

#### Designation

Mix terminal at -16,00 ZH with 300m long. It includes a dredging plan, a project of soil improvement with gravel columns, as well as the caissons and coupling beam projects prepared for the service loads of the Mix Terminal.

#### Services Provided

Soundings Plan, Preliminary, Soil improvement project Tender Project of Boxes and harbour equipments, Technical assistance.

3474

### Fisherman's Wharf (Macau)

### MACAU - CHINA Macau



Macau Government

#### Designation

Fisherman's wharf (temporary) and Tourist Bus Car park.

#### Services Provided

Platform design. Civil and E&M Engineering design.

3672

## Transport (Maritime - Ports)

### Nautic Center, Nam Van Lake

MACAU - CHINA Macau



Macau Government



#### Designation

Nautic Center, Nam Van lake.



#### Services Provided

Construction management.

3671

### Naval Shipyard in Southwest Macau Island

MACAU - CHINA Macau



Macau Government



#### Designation

Naval shipyard in southwest Macau Island.



#### Services Provided

Design.

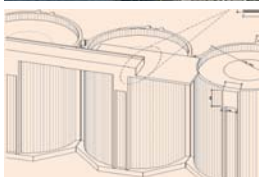
3670

### Design Contest Rehabilitation and Expansion of the Port of Jorf Lasfar

MOROCCO Jorf Lasfar



SGTM Société Générale des Travaux du Maroc



#### Designation

Design contest rehabilitation and expansion of the Port Jorf Lasfar (15 anchorages).



#### Services Provided

Access channel dredging, rehabilitation of access bridges, maritime protection from new and existing slopes, rehabilitation/replacement port equipment(fendering, rolling bearings...)and networks(water; potable, stormwater; sanitation; electric.).

138



## Transport (Maritime - Ports)

### Bata Harbour

### EQUATORIAL GUINEA Bata



Somagec / Etermar



#### Designation

Bata Harbour - the structure of porto consists of prefabricated concrete caissons juxtaposed and filled with ballast, with a crowning of in-situ concrete beam and floor consisting of a reinforced concrete slab.



#### Services Provided

Project implementation: Terminal mixed at -10.0 (zh), 720 m in length for vessels of 20,000 DWT; military port to -8.0 (zh), 160 m in length for vessels of 11,000 DWT; port for the storage of gas-10.0m (zh), with 102m in length.

318

### RO-RO Terminal Expansion and Access Road-Rail (Setúbal)

### PORTUGAL Setúbal



APSS

Harbour Administration of Setúbal and Sesimbra



#### Designation

Wharf provisionally for construction of marine structures terminal Ford-ww in Setúbal.



#### Services Provided

Preliminary Study. Road infrastructure, road network, rail network. Infrastructures general, drainage, paving, signaling, fencing, security guards, illumination and artwork.

601

### Marina Malabo

### EQUATORIAL GUINEA Malabo



Saraiva & Associados



#### Designation

Malabo marina with capacity for 404 boats of various classes.



#### Services Provided

Previous study.

3555

## Transport (Maritime - Ports)

### Aktau Marina

KAZAKHSTAN Aktau



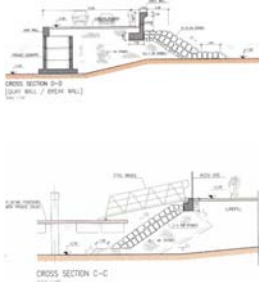
Saraiva & Associados

#### Designation

Aktau marina with capacity for 264 boats of various classes.

#### Services Provided

Previous study.



3554

### Unloading Ore and Coal at Port of Rotterdam

NETHERLANDS Rotterdam



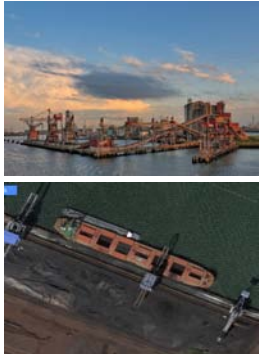
Bureau Ir de Weger

#### Designation

Port installation for unloading ore and coal.

#### Services Provided

Consultancy.



2248

### Sepetiba Port

BRAZIL Sepetiba - Rio Janeiro



**Rockwell Automation**

Rockwell

#### Designation

Sepetiba Port.

#### Services Provided

Unloader installation design.



3506



## Transport (Maritime - Ports)

### Works of Rehabilitation, Expansion and Modernization of Port Luanda

ANGOLA Luanda



Ministry of Transport - Government of Angola

#### Designation

Pier; Warehouses; Highways and railroads; passenger terminal; Zone naval support, general cargo terminals, container and multipurpose; Lease's grain terminal, facilities for waste collection and de-ballasting of ships.

#### Services Provided

Implementation of hydrographic surveying, the port area; Project dredging the bay of Luanda; Project signaling access to the maritime port; Previous studies have described the works and projects.

3336

### Project of Multipurpose Terminal and Ro-Ro Terminal of Port Malabo

EQUATORIAL GUINEA Malabo



Somagrec / Etermar

#### Designation

Multipurpose harbour with 350 m long at -9,0 ZH, and a RO-Ro Terminal at the top of the harbour as well as an harbour for little vessels with 40 m long.

#### Services Provided

Soundings Plan, Preliminary project Improvement soil project, Tender Project of caissons and harbour equipments, Technical Assistance.

3475

### Terminal of Sapec in the Mitrena - Docking Station (Ship 350,000 Dwt)

PORTUGAL Setúbal



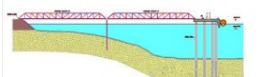
Sapec Agro, S A

#### Designation

Rank of mooring consisting of four dukes of alba and respective causeways of access.

#### Services Provided

Study of alternative in boxes or props and Tender Plan of props solution.



3467

## Transport (Maritime - Ports)

### Kogo Harbour

EQUATORIAL GUINEA Cogo



Somagec / Etermar

#### Designation

Construction access bridge (7m large/700m long) and a harbour bridge with props (40m large/150m long). The works consist in a pre cast concrete tray which is placed over a metal structure of beams supported in metallic piles filled with concrete.

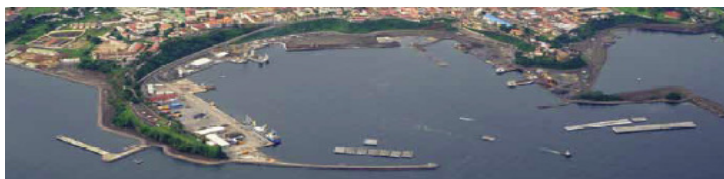
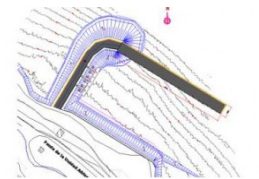
#### Services Provided

Preliminary project and Tender Project. (Construction access bridge and a harbour bridge).

3473

### Navy Terminal of Port Malabo

EQUATORIAL GUINEA Malabo



Somagec / Etermar

#### Designation

The project was about the construction of a harbour at -7,00 ZH with 100 m long, a protection and access pier to the service harbour. Besides these structures, it has been also planned a landing harbour for little vessels.

#### Services Provided

Soundings Plan as well as their interpretation Preliminary project, Improvement soil project, Project of the harbour structures (Boxes and heading beam).

3472

### Containers Terminal of Casablanca - Morocco

MOROCCO Casablanca



SGTM Société Générale des Travaux du Maroc

#### Designation

Terminal (360 m long and -12,5 and 14 ZH deep). It includes dredging plan, found. project, Boxes proj. and heading beam prepared for the service loads of the mix terminal. The earth-work of the back has been conceived to support overloads 60 KN/sq.

#### Services Provided

Soundings Plan, Preliminary Project, Tender Project, Technical Assistance.

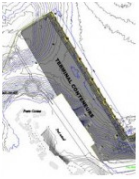
3471



## Transport (Maritime - Ports)

### Containers Terminal of Port Malabo

EQUATORIAL GUINEA Malabo



Somagec / Etermar



#### Designation

The project was about the construction of a harbour at -16,00 ZH with 500 m long, soil improvement with gravel columns as well as the placing of a relief prism and the earth plain of the back.



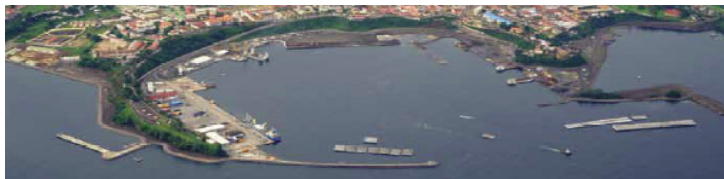
#### Services Provided

Soundings Plan as well as their interpretation Preliminary project which was the base for the proposal, Improvement soil project, Project of the Pear structures (Boxes an heading beam).

3470

### Malabo Port

EQUATORIAL GUINEA Malabo

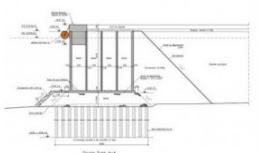


Etermar



#### Designation

Port of Malabo - República da Guiné Equatorial.



#### Services Provided

Tender project for construction of Multipurpose harbour (350m and -9,0ZH), a mix terminal (300m and -16,00ZH), a Containers Terminal (500m and -16,00ZH), a RO-RO Terminal and a Service Harbour (60m and -9.0ZH), a Navy Harbour with pear 137m and -7.0 ZH.

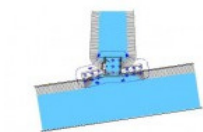
3469

### Walls, Marginal Retention and Floodgates of the Canals of the Aveiro Cit

PORTUGAL Aveiro



Etermar



#### Designation

Variant Project (winning solution of public bid) and tender plan of the structures of the containment walls, of the marginal retention and the floodgates, in the repairing of the canals of Aveiro city.



#### Services Provided

Tender Plan of structures and maritime construction. Technical Assistance.

3468

## Transport (Maritime - Ports)

### New Ferry Terminal, Macau Airport

MACAU - CHINA Taipa



Macau Government

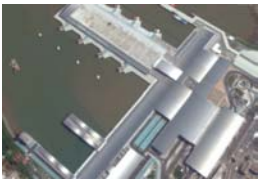
#### Designation

New Jet-Foil's Terminal at the International Airport of Macau.



#### Services Provided

Civil and E&M Design, supervision and construction management.



3494



## Transport (Maritime - Shipyards)

### Mers-El Kebir Shipyard

ALGERIA Mers-El Kebir



Algeria Government



#### Designation

Mers-El Kebir shipbuilding yard for ships up to 150,000 tdw.



#### Services Provided

Design for bidding purposes (sub-mitted. by Consortium - Navelink-Ballast-Mague).

2699

### ASRY Naval Shipyard

BAHRAIN Bahrain



ASRY - Arab Shipbuilding and Repair Yard



#### Designation

Expansion of the ASRY shipyard



#### Services Provided

Design and construction of the repair yard of Bahrain, in association with the Lisnave Portugal. Technical and economic feasibility study (in association)

2698

### Mangália Dock

ROMANIA Mangália



Uzinexportimport



#### Designation

Gate for the Mangalia dry dock.



#### Services Provided

Design and consultancy.

2695

## Transport (Maritime - Shipyards)

### Gdynia Shipyard

POLAND Gdynia



Komuna Paryska Shipyard



#### Designation

Shipbuilding yard for vessels up to 450,000 tdw.



#### Services Provided

Design for bidding purposes.

2692

### Naval Repair Shipyard in São Paulo State

BRAZIL São Paulo



SUNAMAM National Superintendency  
Merchant Marine



#### Designation

Naval repair shipyard in São Paulo State



#### Services Provided

Consultancy; location, "layout" studies; cost estimation; planning

2691

### Naval Shipyard Mormugão

INDIA Goa



LISNAVE - NAVELINK



#### Designation

Shipyard to the port of Mormugão.



#### Services Provided

Project base.

596



## Transport (Maritime - Shipyards)

### Port of Viana do Castelo (construction of a dock)

PORTUGAL Viana do Castelo



ENVC (Shipyards of Viana do Castelo)



#### Designation

The first major expansion of the yard included the initial construction of a dock, with 187m x 65m, and funds to -6.5 m elevation (ZH) and 595m of quay. The works included 900m of rolling roads for cranes and the enlargement of a dock.



#### Services Provided

Technical feasibility studies and geotechnical sites; Project planning for execution of civil engineering works, electricity networks and fluids and includes, planning, coordination and supervision of works.

3302

### Naval Shipyard Malabo

EQUATORIAL GUINEA Malabo



SOMAGEC/ETERMAR



#### Designation

Naval shipyard construction and repair.



#### Services Provided

The implementation of the project, technical assistance and monitoring.

3603

### Naval Shipyard of Peniche (draft revision of the existing layout)

PORTUGAL Peniche



ENP (Shipyards of Peniche)



#### Designation

Peniche naval shipyard



#### Services Provided

Design and supervision: draft revision of the existing layout, the new inclined plane, new infrastructure, technical networks and the respective supervisory and technical assistance, for the project of modernization and expansion of the shipyards.

3559

## Transport (Maritime - Shipyards)

### Naval Shipyard of Maua (extension of dry docking capability)

BRAZIL Niterói - Rio de Janeiro

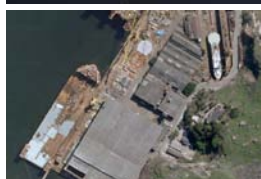


SYNERGY GROUP



#### Designation

Maua naval shipyard



#### Services Provided

Developed studies aimed at the improvement of new shipyard facilities, in particular when the extension of dry docking capability for repair of vessels.

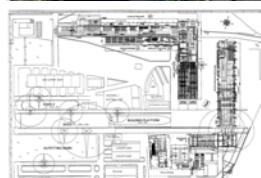
3558

### Shipyard in Viana do Castelo (new workshop block)

PORTUGAL Viana do Castelo



ENVC (Shipyards of Viana do Castelo)



#### Designation

New infrastructure projects and workshop block. The project is part of the modernization and expanding Shipyard of Viana do Castelo.



#### Services Provided

New infrastructure projects and new workshop block (200mx40m) including access traffic inside, technical networks, the metallic structure and layout of the workshop. Works supervision of works.

3557

### Shipyard Algiers (proposal technical and financial)

ALGERIA Alger



ERENAV E.P.E. - S.P.A.



#### Designation

Naval shipyard in Algiers.



#### Services Provided

Restricted consultation. Proposal Technical and Financial. Conducting studies of modernization and development of the shipyard.

3544



## Transport (Maritime - Shipyards)

### Shipyard of Viana do Castelo (expansion of shipyard)

PORTUGAL Viana do Castelo



ENVC (Shipyards of Viana do Castelo)



#### Designation

The expansions over time, seem with a view to their suitability for the diversification of construction activity last naval. A included demolition of the old breakwater Howler, the construction of new docks with 300 m.



#### Services Provided

Verification of project implementation, planning, coordination and supervision of works.

3325

### Shipyard of Viana do Castelo (Construction of shipyard platform)

PORTUGAL Viana do Castelo



ENVC (Shipyards of Viana do Castelo)



#### Designation

Construction of a new building platform, as an extension of the dock No. 1. This platform, with 140 m 32 m wide, would allow the construction of vessels up to 40 000tdw. The bottom slab of the surface has an elevation of +1.3 m (ZH).



#### Services Provided

Project planning of civil engineering works and preparation of the tender process; Review of proposals and preparation of contractual documents for procurement, planning, coordination and supervision of works.

3320

### Brandão Port (cleaning station ship-tankers)

PORTUGAL Porto Brandão - Almada



GASLIMPO (Degassing of Ships Company)



#### Designation

The cleaning station tanker of Brandão Port has a berth of VLCC ships and ground facilities for slops collecting and washing water of ships.



#### Services Provided

Research study of local conditions and the "layout" Project planning and preparation of the tender; Planning, coordinating and supervising the work.

3300

## Transport (Maritime - Shipyards)

### Port of Setubal, Mitrena (cleaning station ship)

PORTUGAL Mitrena - Setúbal



**GASLIMPO** (Degassing of Ships Company)

#### Designation

The cleaning station tankers Gaslimpo in Mitrena, has a maritime terminal for receipt of VLCC tankers and ground facilities for receiving washing water and slops from ships 82.500m<sup>3</sup>/year.

#### Services Provided

Profabril was responsible for providing the following services: Research studies of local conditions and layout, Project planning and preparation of the tender process, planning, coordination and supervision of the work.

3303

### ASRY Naval Shipyard (feasibility studies)

BAHRAIN Bahrain



**ASRY** - Arab Shipbuilding and Repair Yard

#### Designation

The yard of ASRY, was designed to receive large oil tankers (VLCC) to 450 000tdw. The ASRY is an industrial venture formed by seven of the OAPC Arab countries (Bahrain, Saudi Arabia, Kuwait, Libya, Iraq, Qatar and UAE)

#### Services Provided

The Consortium Profabril-GIBB, elaborated: feasibility studies; project, dredging, excavation of the hole in the dry dock, steel structures of buildings, electricity networks and fluids, analysis of proposals, planning and supervision.

3301

### Mitrena Shipyard Naval (dock repair)

PORTUGAL Setúbal



**SETENAVE** - Shipyard Setubal

#### Designation

Dock Repair of 450m in length; Platform with 420m, 4 bridges wharf

#### Services Provided

Location studies and "layout" Research studies of local conditions; Project Planning of civil engineering works and electrical installations, planning, coordination and supervision of the work.

3298



## Transport (Maritime - Shipyards)

### Cadiz Repair Shipyard (new dry dock)

SPAIN Cádiz



AESA (Spanish shipyards)



#### Designation

Broadening the yard with a new dry dock capable of receiving ships up to 400,000 tdw.



#### Services Provided

Project planning base; project implementation; technical assistance to the builder.

3297

### Naval Repair Shipyard of Margueira (1st phase: construction of 2 docks)

PORTUGAL Almada



LISNAVE - Estaleiros Navais, S A



#### Designation

Stage 1: Construction of two docks with 350 and 266 meters long. Stage 2: Increase in shipyards for construction of two docks with 520 and 350 meters long.



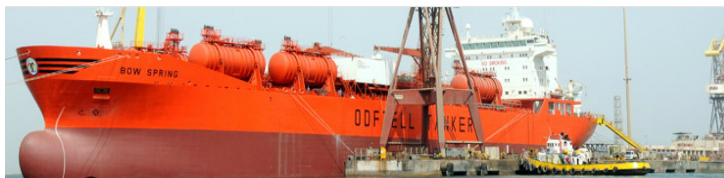
#### Services Provided

Phase 1: Design of civil engineering works. In Phase 2, the general contractor was responsible for project execution of the docks, and Profabril was responsible for the project from other work and supervising the work.

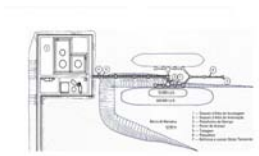
3296

### ASRY Naval Shipyard (Station of Degassing)

BAHRAIN Bahrain



ASRY - Arab Shipbuilding and Repair Yard



#### Designation

The station of degassing and cleaning of tanks from 10,000 to 500,000tdw includes a anchorage, reservoirs, pumping stations and air and ground infrastructure. The layout provides a berth in the initial phase.



#### Services Provided

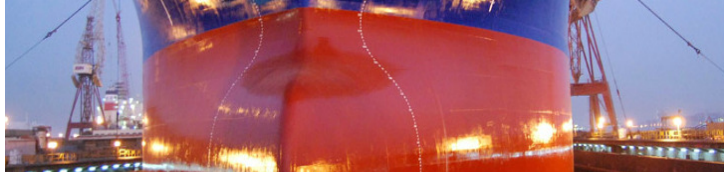
In association with Sir Alexander Gibb & Partners and Lisnave, paid services: Studies of location, layout of the marine works and civil engineering, Project planning and preparation of the competition.

3309

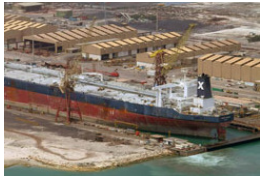
## Transport (Naval - Cleaning Tanker)

### Tanker cleaning station

BAHRAIN Bahrain



ASRY - Arab Shipbuilding and Repair  
Yard



#### Designation

Tanker cleaning station



#### Services Provided

Preliminary basic study covering site location, layout, equipment and cost estimate

2719

## Transport (Naval - Fishing)

### Fishing Ports in Aveiro, Sesimbra and Sines

PORTUGAL Aveiro / Sesimbra / Sines



Docapesca (Ports and Fish Market)



#### Designation

Refurbishment of units of packaging and packaging of Fish Fishing Ports of Aveiro, Sesimbra and Sines



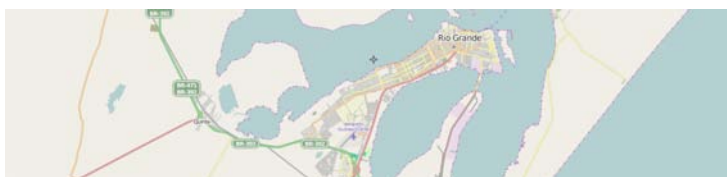
#### Services Provided

Engineering design of architecture, structures, electrical facilities, ventilation, water and sewage, measurements and budgets.

2814

### Ice Factory (Rio Grande do Sul)

BRAZIL Rio Grande do Sul



GEDIP (Executive Develop. Group  
Fishing Industry)



#### Designation

Ice factory (660 t/day).



#### Services Provided

Technical and economic feasibility studies; design.

2727

### Cold Storage

. TOME AND PRINCIPE S. Tomé e Príncipe



SAPLA - Sociedade de Armadores da  
Pesca da Lagosta



#### Designation

S. Tomé cold storage - 1st. phase: preparation and cold storage of fish and sea food (1.500 t).



#### Services Provided

Complete design of the plant; preliminary design of maritime works.

2728



## Transport (Naval - Fishing)

### 2 Fish Canneries and 1 Fish Freezing Complex

PORTUGAL Ponta Delgada / Madalena do Pico



#### Designation

Studies of energy savings from the factories of Ponta Delgada canned fish, Madalena do Pico and installation of Gelaçores fish freezing.



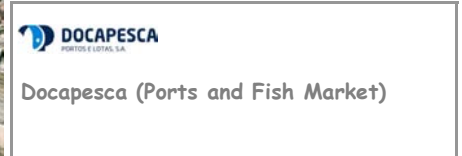
#### Services Provided

Energy auditing and proposal of en-ergy economic solution

2734

### Fishing Port in Pedrouços

PORTUGAL Pedrouços



#### Designation

Integration of Lisbon fish market in the company's concession



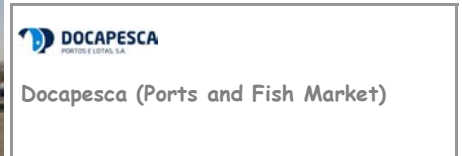
#### Services Provided

Study of fish consumption and technical and economic solutions; preliminary design; economic feasibility study of the project.

2736

### Fishing Port in Portimão

PORTUGAL Portimão



#### Designation

Fishing Port in Portimão



#### Services Provided

Tender.

225